



“Returning to school is vital for children’s education and for their wellbeing. Time out of school is detrimental for children’s cognitive and academic development, particularly for disadvantaged children. This impact can affect both current levels of learning and children’s future ability to learn, and therefore we need to ensure all pupils can return to school sooner rather than later.”

DFE guidance August 2020



Operation guidance Term 1 2020

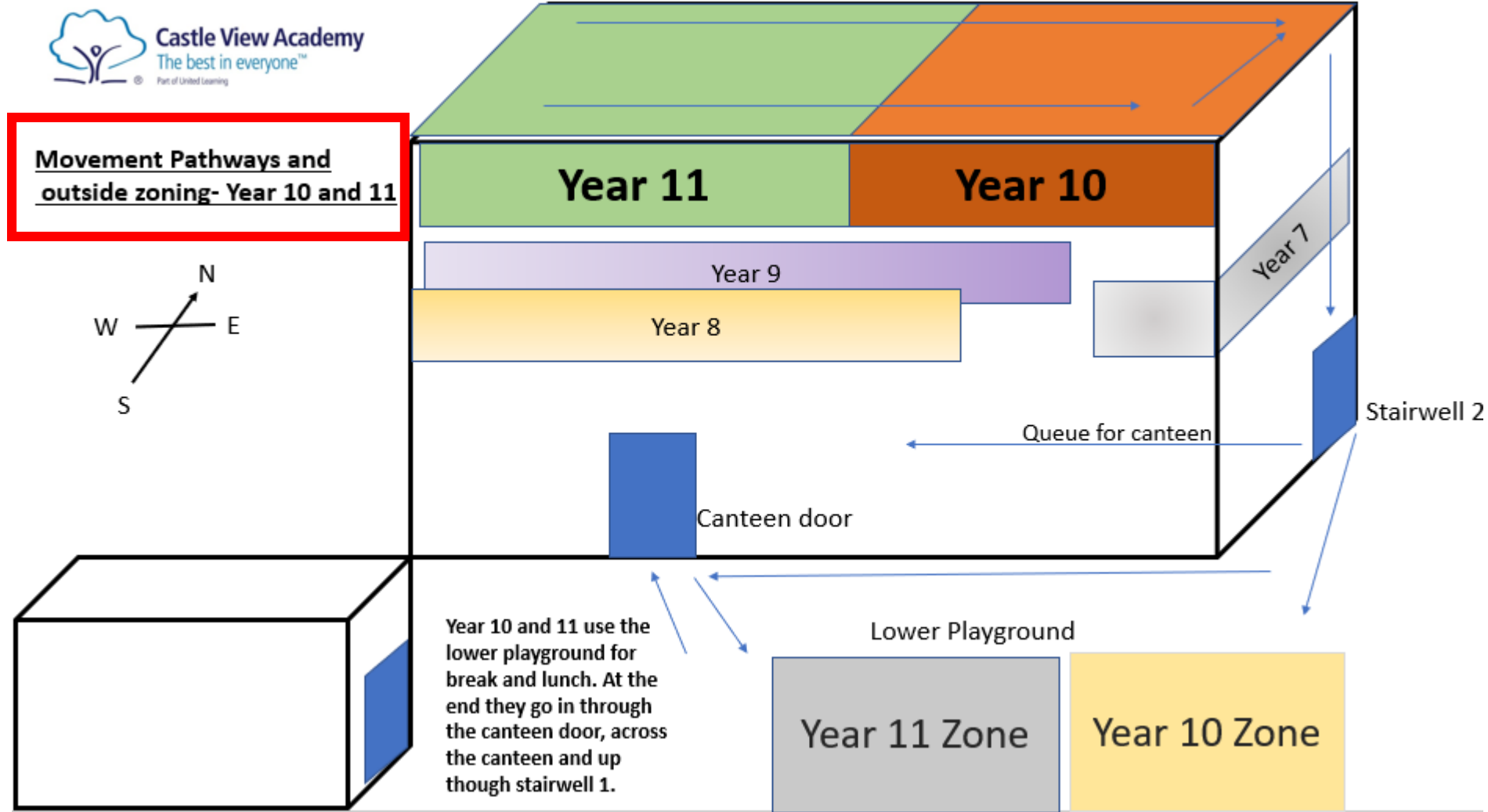
Overview of what will be discussed:

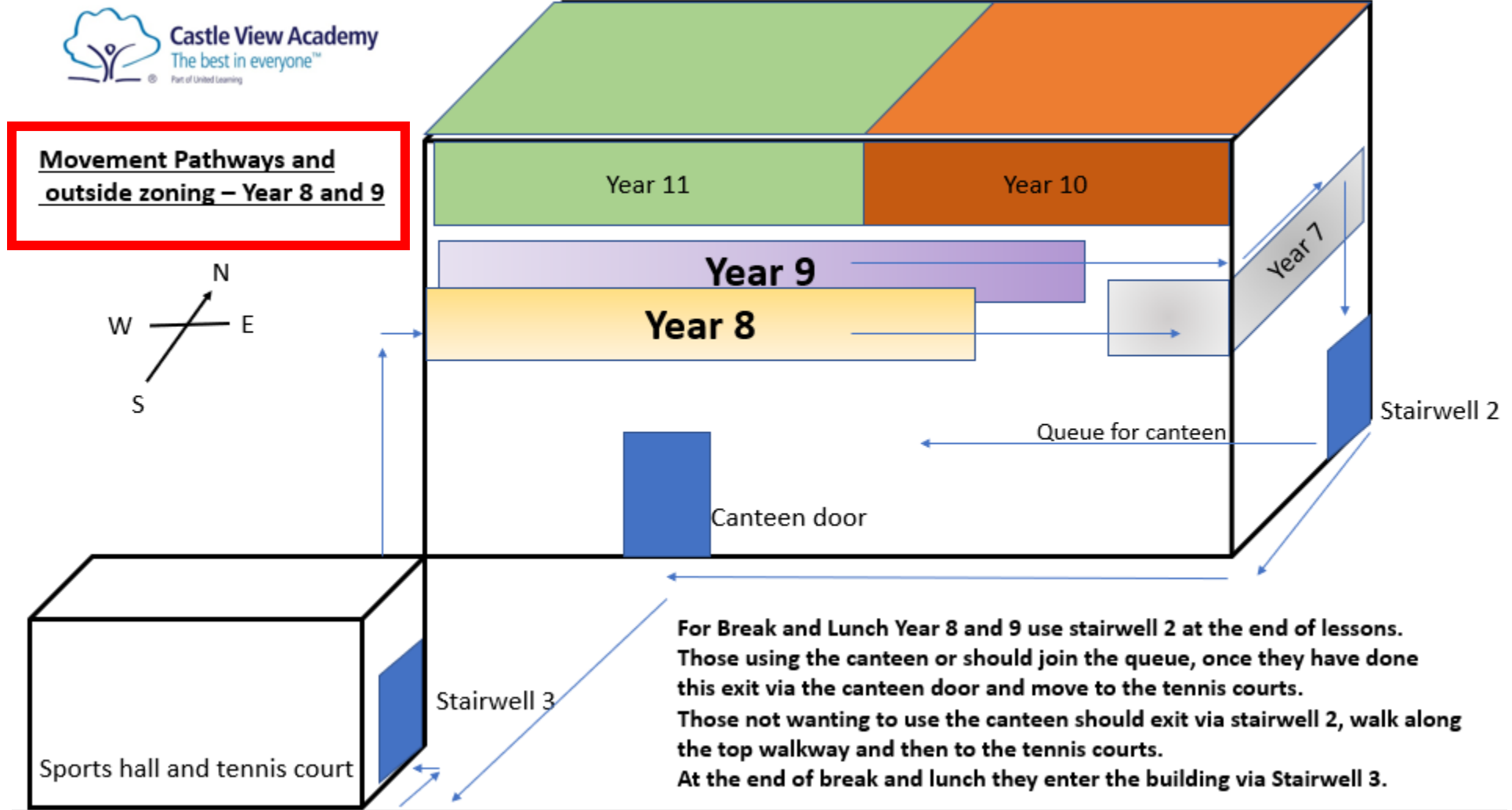
- What does the school look like?
- How is my child be taught?
- What is the timing of the school day?
- What does my child's classroom look like?
- What equipment does my child require?
- What are the uniform expectations?
- What can my child eat at school?
- What is expected of my child?



What does the school look like?

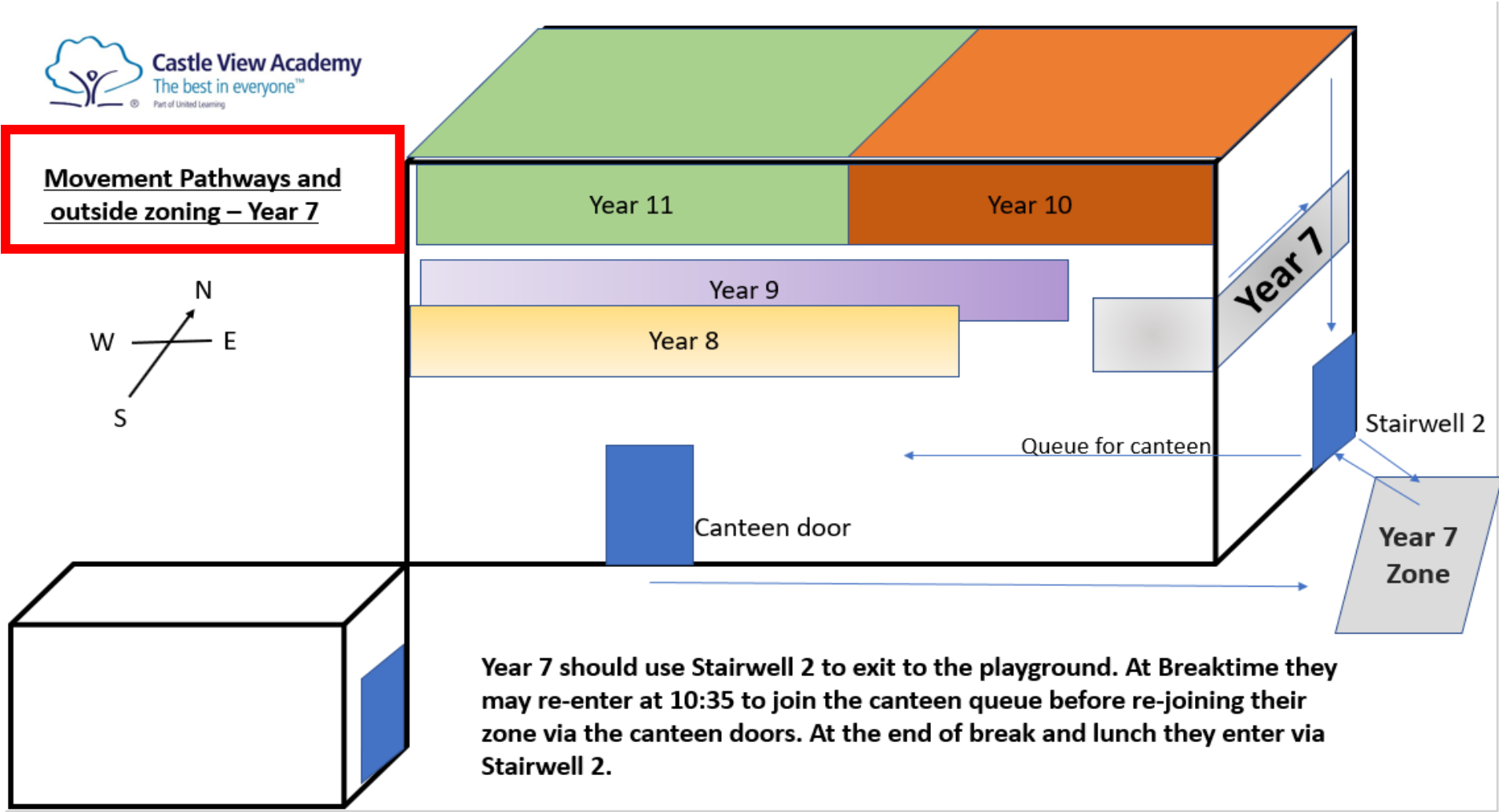
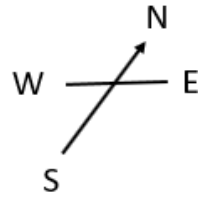
- We want the school to be welcoming and as ‘normal’ as possible.
- It is important that school is a safe place for students however it is equally important that it is not ‘clinical’ and retains the features a school should have.
- We have ensured the school has been thoroughly cleaned and have spent significant time considering the lay out and operation of the building to meet current government guidance.
- We have enhanced our hygiene facilities – ensuring there are multiple hand sanitising stations throughout the main corridors







Movement Pathways and outside zoning – Year 7



Year 7 should use Stairwell 2 to exit to the playground. At Breaktime they may re-enter at 10:35 to join the canteen queue before re-joining their zone via the canteen doors. At the end of break and lunch they enter via Stairwell 2.



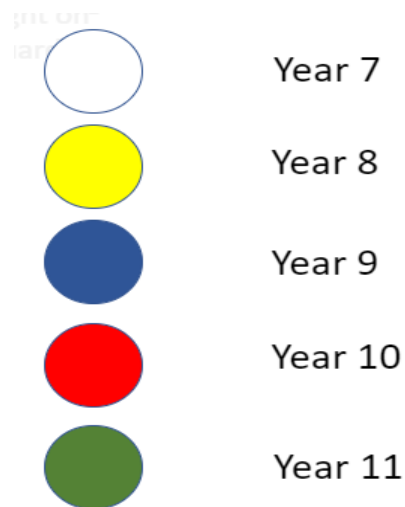
How is my child be taught?

- Children attend school in year group bubbles.
- Year groups are contained to an area of the school.
- Each year group has a classroom base where the majority of their classes will be taught.
- Teachers move to classes where possible; with the exception of Practical or Science subjects.
- Year groups have a staggered day; separate start and end
- Year groups are allocated an outdoor 'zone' for break and lunch



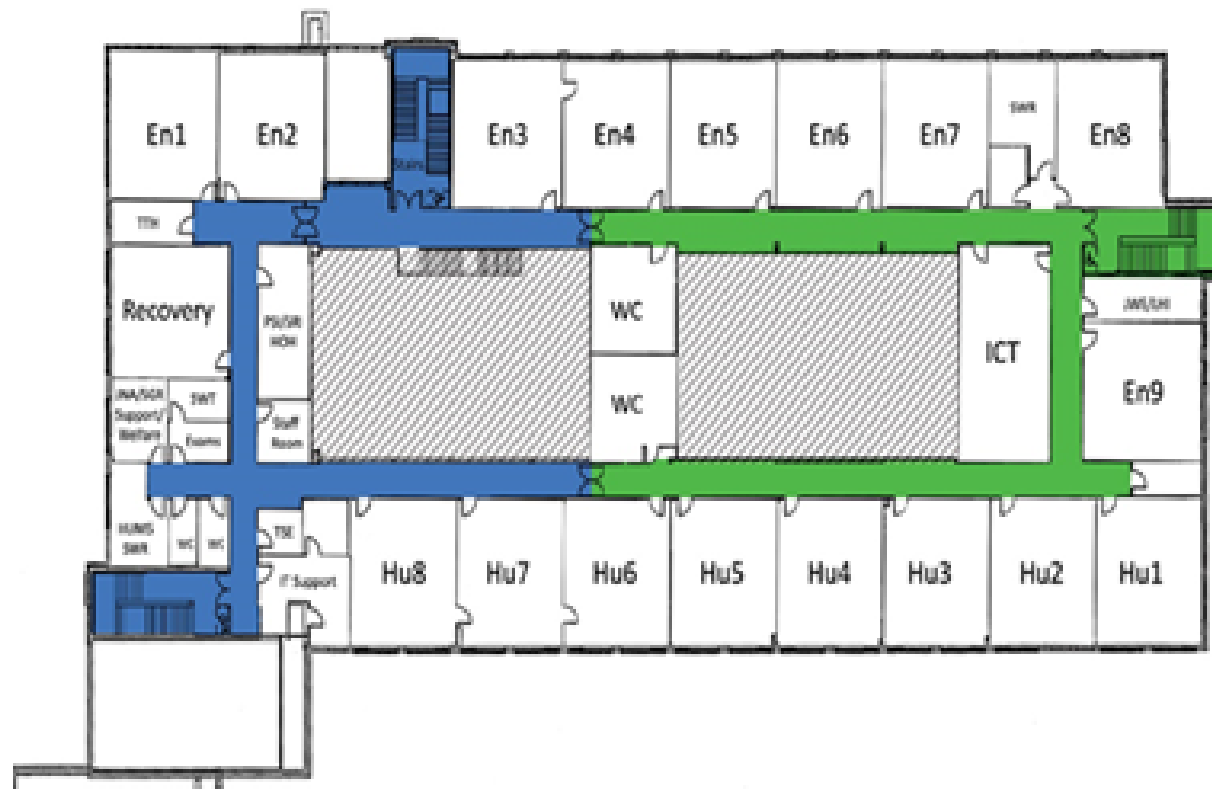
Zones and identification explained

- So that we can easily identify the year group bubbles we have colour coded year groups as indicated below.
- The year group zones are also matched to the student colour code



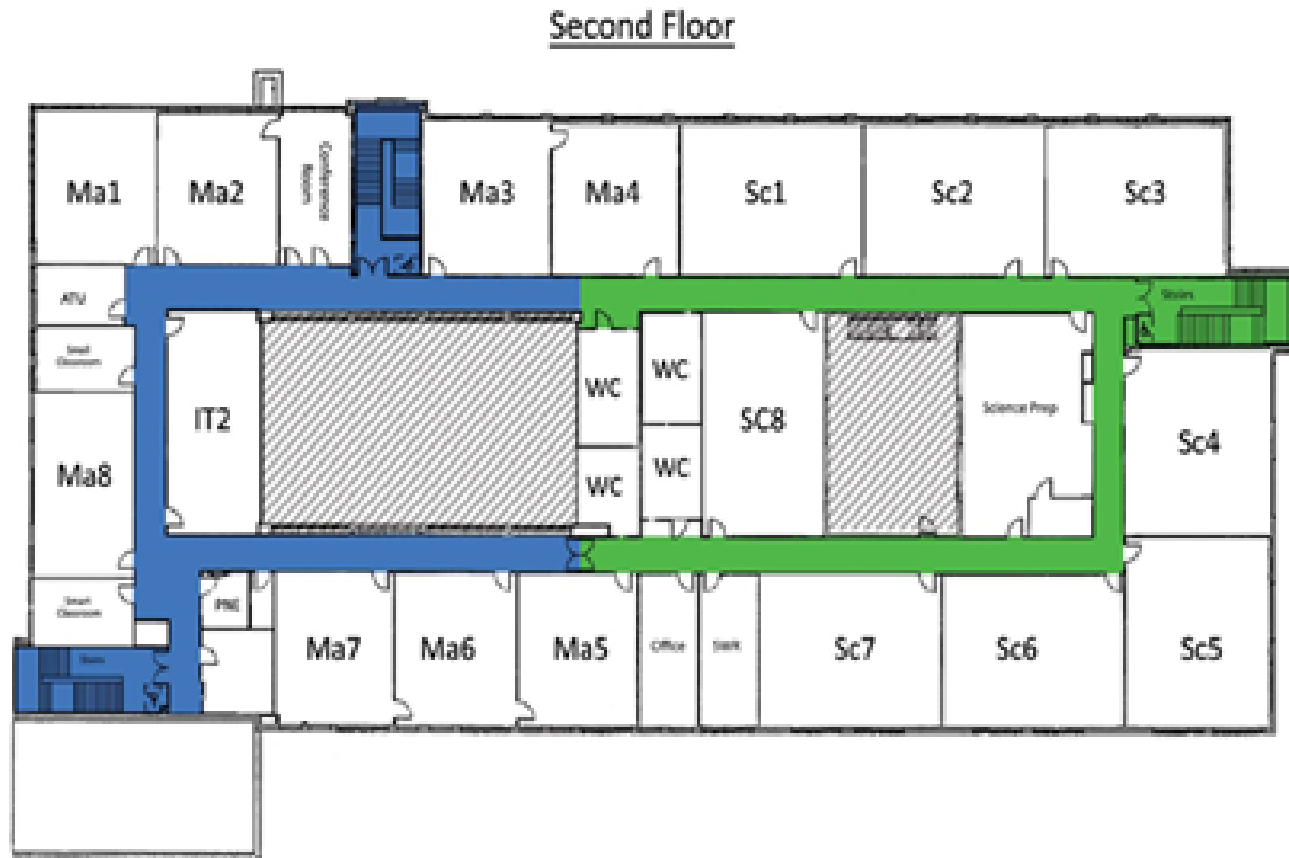
- Students wear a colour coded badge on their left lapel to enable all staff to easily see year groups

First Floor: Year 7, 8 and 9



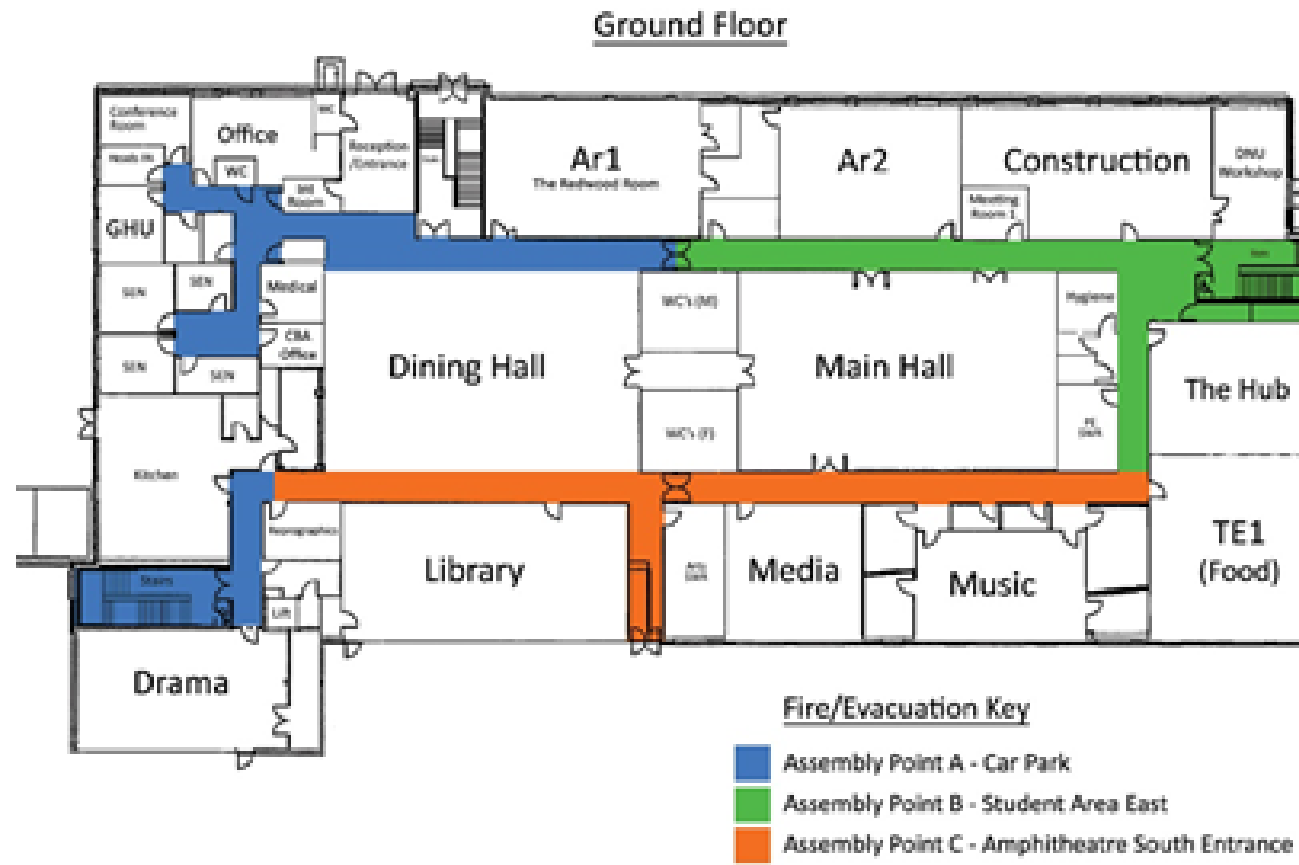
- Year 7 Home Rooms are Hu2; Hu3; En9; En8; En7
- Year 8 Home Rooms are Hu8; Hu7; Hu6; Hu5; Hu4
- Year 9 Home Rooms are En1, En2, En3, En5

Second Floor: Year 10 and Year 11



- Year 10 Home Rooms are Sc1; Sc2; Sc5; Sc 6; Sc7
- Year 11 Home Rooms are Ma1; Ma3; Ma4; Ma6; Ma7; Ma8
- Sc3 (KS3) and Sc4 (KS4) are bookable practical rooms. They will be cleaned between booked practical lessons

Ground Floor: Specialist Rooms / Canteen



- Classrooms on the ground floor are practical classrooms and will be accessed by all years for their timetabled lessons
- In accordance with DfE guidance, these rooms will be cleaned at the end of each day and equipment wiped down
- The Main Hall will be the IE room and centralised detentions in Year groups will be located here so that students are socially distanced
- We are working with the canteen to provide a system that will allow students to move through quickly when purchasing food



What is the timing of the School Day

- Students arrive for school via the student entrance
- Students are not permitted on site BEFORE their designated time
- 8:20 am – Year 10 and 11 (Roll call will take place at 8:30 am)
- 8:30 am – Year 7, 8 and 9 (Roll call will take place at 8:40 am)
- Students wait in year group lines, before entering the academy

- The student gate will be closed at 8:30 am for Year 10 and 11 ; 8:40 am for Year 7, 8 and 9
- Students classified as 'late' after these times remain on site for a same day detention until 4:10 pm (in year group bubbles)



Timing of the School Day

- School will end at the following times:
 - Year 7, 8 and 9 – 3:10 pm
 - Year 10 – 3:15 pm
 - Year 11 – 4:00 pm

- Our school day consists of 4 x 70 minute lessons



What does my child's classroom look like?



- Each classroom has 16 desks and 32 chairs
- Teachers teach from the front and circulate the room at a distance
- Students face forward and listen
- Student books remain in the classroom
- All rooms are cleaned each evening



What equipment does my child require?

- 2 green pens
- 2 black pens
- 2 pencils
- 30cm clear plastic ruler
- Large clear plastic pencil case
- Eraser
- Highlighter
- Protractor
- Scientific Calculator
- Sharpener



- School bag
- Student Planner (given on day 1)
- Knowledge Organiser booklet (given on day 1)



What are the Uniform expectations?

- Students must be in **full** school uniform

Uniform: Girls	Uniform: Boys
<ul style="list-style-type: none">• Bedford check pleated skirt with a white cotton reversed blouse (square corners) OR• Dark grey/charcoal trousers (only from Penelope Ann or Hargreaves) with white button shirt and tie• Academy logo blazer• Academy logo jumper (optional)• Black formal leather or leather look shoes• Black tights or black knee lengths socks (no bows)	<ul style="list-style-type: none">• Dark grey/charcoal trousers• Long or short sleeve white cotton shirt• Academy logo blazer• Academy logo jumper (optional)• Academy tie• Black formal leather or leather look• Black socks• Black belt (if required) – no designer buckle





What about Sport, Dance and Drama?

- Students must be in Castle View Academy PE kit
- Students will change into their PE kit during the school day
- They are NOT required to wear their sport kit to the school

PE Kit: Girls (also worn for Dance / Drama)	PE Kit: Boys (also worn for Dance / Drama)
<ul style="list-style-type: none">• Academy logo polo shirt with sky blue side stripe• Navy blue shorts or skort• Sky blue football/hockey socks (knee length) for outdoor sports• Navy/black tracksuit bottoms (non-branded) or sports legging• Suitable trainers	<ul style="list-style-type: none">• Academy logo polo shirt with sky blue side stripe• Navy shorts• White socks• Sky blue football/hockey socks for outdoor sports• Navy/black tracksuit bottoms (non-branded)• Suitable trainers



Can children wear a face covering?

- Unless we experience a local lockdown in our area, face coverings remain optional for staff and students
- Students using public transport **MUST** wear a face covering
- If parents wish for their child/children *not* to wear a face covering, this is fine – providing that all school rules are adhered to regarding social distancing
- If parents wish for their child/children to wear a face covering, this is also fine – again, adhering to all school rules regarding social distancing
- Staff will be given the option to wear a face covering – this will be a clear visor so that they can be heard and seen more clearly while teaching



What are the expectations when wearing a face covering?






- All face coverings worn must be plain coloured with no patterns.
- All students wearing coverings must bring a resealable bag for storing them during meal times.
- Those who choose to wear face coverings must wear it at all times (other than at meal times). Note: students cannot choose to wear a face covering at some points of the day and not others.
- Face coverings must be put in a resealable plastic bag while eating, then put back on after eating.
- Students who deliberately wear their face covering incorrectly, e.g. on their chin or forehead, will be asked to remove their mask for the day and put in their resealable plastic bag.
- Parents must contact the school via email if they wish for their child to wear a mask.

Head@castleviewacademy.org.uk



What can my child eat at school?

- Our school canteen operates a limited menu, consisting of mainly 'grab and go' items
- Students pay with their finger print or pin code
- NO CASH is allowed in school; Parents MUST use the Scopay website to put money on their child's account

Lunch Menu					
FSM meal deal Cold Drinks available					
Week 1	Monday	Tuesday	Wednesday	Thursday	Friday
Main Meal	Beef Bolognese 	Marinated Chicken Pieces Served with Potato Wedges 	Roast Turkey, Stuffing and Cranberry Sauce in a Wholemeal Baguette 	 Delhi Tikka Chicken Masala served with Rice	 Battered Fish Tartare sauce Served with chips and peas
Vegetarian Main Meal	Quorn Ragu in a rich tomato sauce	Spicy Bean Burger Served with Potato Wedges	Macaroni Cheese served with Garlic Bread	Mughlai Vegetable Korma served with Rice	Fajita Spiced Vegetable Tacos with Mexican Rice
Hot Grab & Go	A daily choice of Pasta with Toppings, hot filled meat or vegetarian panini sand other hot grab and go items				
Cold Grab & Go	A selection of Sandwiches, Baguettes, Salad Pots, Fruit & Dessert				



What is expected of my child?

- Parents expect us to maintain our high standards
- We pride ourselves on our 'disruption free' learning environment
- We expect students to be respectful to each other, to follow the Castle View rules and to treat each other with kindness
- Our behaviour for learning policy has been adopted to ensure we support students who may be anxious regarding COVID compliance.
- Our policies and risk assessment can be found on our website

- The #CV PROUD card and withdrawal from class continues to be enforced



Further information

- We communicate with parents via text message, email, facebook and twitter
- Parents can also contact head@castleviewacademy.org.uk
- We aim to respond within 24 hours

Thank you for your ongoing support